



RIGEL

RIGEL Schiffahrts GmbH & Co. KG

Domshof 14/15 | 28195 Bremen | Germany

Phone +49 (0)421-173 99-0 | **Fax** +49 (0)421-173 99-50

E-Mail contact@rigel-hb.com | **Web** www.rigel-hb.com

YOUR GUIDING STAR AT SEA

Class and register information

LR + 100 A1

Double hull Oil/Chemical tanker

Ship type 3 ESP CSR, +LMC,

UMS, *IWS, COW, BWM

Flag

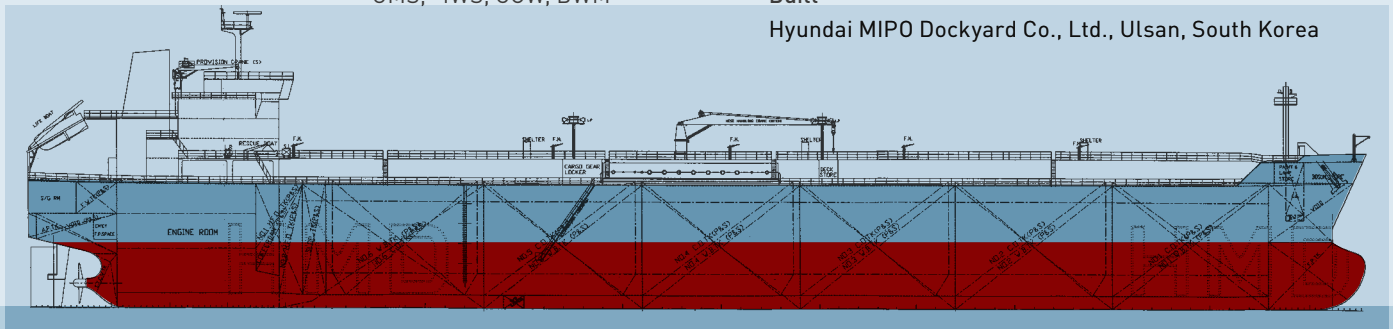
British Isle of Man

Port of registry

Douglas

Built

Hyundai MIPO Dockyard Co., Ltd., Ulsan, South Korea



VESSEL TYPE COT 43

Vessel name	Delivery	IMO No.	Callsign
MT Mekong Star	01/2009	9411135	2BQX4
MT Orinoco Star	03/2009	9411989	2BTS2
MT Yukon Star	04/2009	9411991	2BWW6
MT Zambezi Star	02/2010	9412000	2CKK9

Main particulars

Lenght over all	abt. 184.00 m	Gross tonnage	abt. 23,312
Lpp	abt. 177.50 m	Net tonnage	abt. 9,972
Breadth moulded (Beam)	abt. 27.40 m	Panama net	abt. 19,419
Depth moulded	abt. 17.20 m	Suez net	abt. 20,874
Draught (Draft)	abt. 11.50 m	Bow to center of manifold	abt. 92.16 m
Deadweight (dwt)	abt. 37,850 mt	Keel to top of mast	abt. 46.93 m
SBT	abt. 17,500 m ³	PBL manifold – fwd	abt. 43.83 m
Draught SBT	abt. 6.50 m	PBL manifold – aft	abt. 43.83 m

* t.b.n. = to be nominated



RIGEL

RIGEL Schiffahrts GmbH & Co. KG
Domshof 14/15 | 28195 Bremen | Germany

Phone +49 (0) 421-173 99-0 | **Fax** +49 (0) 421-173 99-50
E-Mail contact@rigel-hb.com | **Web** www.rigel-hb.com

YOUR GUIDING STAR AT SEA



VESSEL TYPE COT 43

Cargo system and equipment

Total cargo capacity 98 %	42,630 m ³ incl. slop tanks 268,134 bbls
Number of segregations	6 + 1
Number/type of cargo pumps	10 pumps of 500 m ³ /h each Framo Deepwell 2 pumps of 300 m ³ /h each Framo Deepwell 2 pumps of 200 m ³ /h each Framo Deepwell
Pumping capacity	abt. 2,500 m ³ /h (theoretical)
Loading capacity	abt. 3,000 m ³ /h (theoretical)
Vapour return	Yes
Tank coating	Phenolic epoxy
Heating arrangement	Steam heat exchangers on deck (Framo)
Heating capacity	Max. 70 °C
Tank gauging system	Tank radar – online system
Closed loading/sampling	Yes
Tank cleaning	acc. ETC
Hose crane, SWL	10 mts
Inert gas system	Yes

Machine and propulsion

Main engine	MAN B & W Output 7,860 kW at 129 rpm, 6 S 46 MC-C
Service speed	abt. 14.5 knots
Consumption	abt. 29.0 mts/d.s.g. in operation
Aux engines	3 x 730 KVA
Propeller	Fixed propeller

CARGO TANKS

CT 1 port 2,583.4 m ³	CT 1 stb 2,583.4 m ³	
CT 2 port 3,641.9 m ³	CT 2 stb 3,641.9 m ³	
CT 3 port 3,710.3 m ³	CT 3 stb 3,710.3 m ³	
CT 4 port 3,710.3 m ³	CT 4 stb 3,710.3 m ³	
CT 5 port 3,710.3 m ³	CT 5 stb 3,710.3 m ³	
CT 6 port 3,439.1 m ³	CT 6 stb 3,439.1 m ³	
Slop port 536.4 m ³	Slop stb 536.4 m ³	

All details are about and given in good faith but without any guarantee. For further information, please contact us.